

Thermo Scientific Konelab 20 and 20XT
Clinical Chemistry Analyzers

Ease of use and cost-efficiency
in clinical chemistry analysis

Thermo
SCIENTIFIC

Proven analyzers for high quality testing

The automated Thermo Scientific Konelab 20 and 20XT analyzers are designed for convenient and precise clinical chemistry analysis. They combine the ease of use and proven technologies to increase cost-efficiency in small laboratories. They are well suited for routine and specialty chemistry testing by offering various automated features.

Extra efficiency

Thermo Scientific Konelab 20 and 20XT offer easily adaptable and precise analysis for smaller laboratories which appreciate high degree of automation and cost efficiency. Compact size offers extra efficiency with a small footprint. The analyzers do not require any external water supply or drainage.

Continuous, reliable operation

The automated operation of Konelab 20 and 20XT analyzers facilitates and speeds up sample and reagent handling.

- Continuous sample and reagent loading without interrupting the measurement.
- Ready for use, barcoded reagent vessels.
- A real-time monitoring of reagent usage, possibility to run QC with every new bottle.

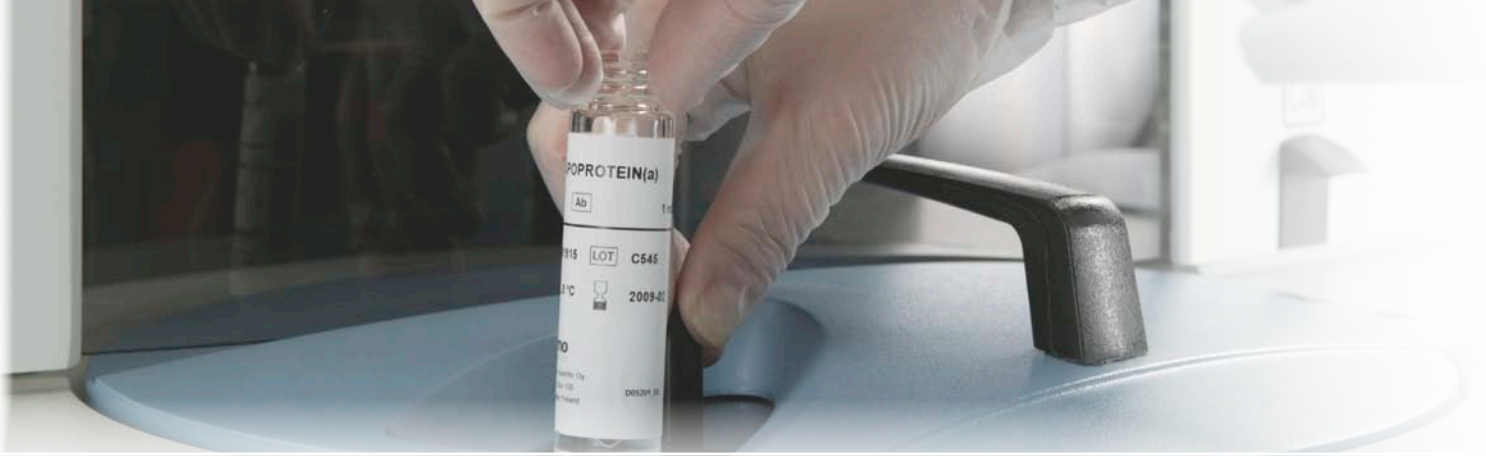
Economical, safe analysis

The unique low-volume cuvette design ensures error free operation and minimum reagent consumption, making the Konelab analyzers very cost-effective.

- Disposable cuvettes having 12 reaction cells per cuvette.
- A typical reaction volume of 120-150 μ l.
- Versatile automatic dilution features cover pre- and post-dilutions.
- Automatic dispensing of calibrator series from one stock calibrator for most specific proteins tests.
- Reflex testing capability.
- Automated sample pretreatment feature, e.g., in HbA1c measurement eliminates the manual hemolyzing step.

Automated sample pretreatment saves time in sample processing, improves quality and increases cost-efficiency.





Easy to use

The Konelab user interface is clear and easy to navigate.

- Broad range of language options.
- Quick daily start-up.
- Daily maintenance of only 5 minutes.
- Bi-directional LIS interface.
- Results, calibrations and reagent lots stored in a database for archiving purposes.

Wide test range

Comprehensive menu of CE marked system applications cover the analysis of enzymes, substrates, electrolytes and specific proteins. The range of Konelab 20XT tests is extended also to more esoteric assays used for drugs of abuse testing and therapeutic drug monitoring.

Both 20 and 20XT have an optional ISE module for direct determination of K^+ , Na^+ and Cl^- . Li^+ can be included as an optional extra. All the electrodes are ready-to-use and maintenance-free.

The Konelab system reagent menu covers over 80 carefully validated methods.



The Ion Selective Electrodes

Konelab 20 menu

- Enzymes
- Substrates
- Electrolytes
- Specific Proteins

Konelab 20XT menu

- Enzymes
- Substrates
- Electrolytes
- Specific Proteins
- Drugs of Abuse Tests
- Therapeutic Drug Monitoring Tests



The 12-position Multicell Cuvette



Konelab 20

- Capacity of up to 200 tests/hour
- Continuous access to samples, reagents and cuvettes
- Up to 84 samples on-board
- 35 cooled reagent positions
- 600 cuvette storage positions
- Dimensions: 80 cm (w), 79 cm (d), 115 cm (h)
- Routine clinical chemistry menu, ISE option



Konelab 20XT

- Capacity of up to 250 tests/hour
- Continuous access to samples, reagents and cuvettes
- Up to 84 samples on-board
- 35 cooled reagent positions
- 600 cuvette storage positions
- Dimensions: 80 cm (w), 79 cm (d), 115 cm (h)
- Routine and specialty chemistry menu, ISE option

Konelab analyzer series

The higher throughput Konelab PRIME 30 and 60 with further extended automation features belong to the same proven instrument series. Konelab PRIME 30 and 60 are ideal choices for medium sized laboratories as a stand-alone instrument or as part of a high-capacity workcell.

All Thermo Scientific Konelab analyzer systems comply with the In Vitro Diagnostic Medical Devices Directive 98/79/EC (IVDMDD).

thermoscientific.com

© 2012 Thermo Fisher Scientific Inc. All rights reserved. All trademarks are the property of Thermo Fisher Scientific Inc. and its subsidiaries. Product and application availability may vary from country to country. Please contact your local sales representative for more information.

Australia: Tel: +61-1800-333-110 | email: auinfo@thermofisher.com
Europe: Tel: +358-9-329-100 | email: sales.cdx.fi@thermofisher.com
North America: Tel: 1-800-232-3342 | email: sales.diagnostics.fmt@thermofisher.com

Thermo
SCIENTIFIC
Part of Thermo Fisher Scientific